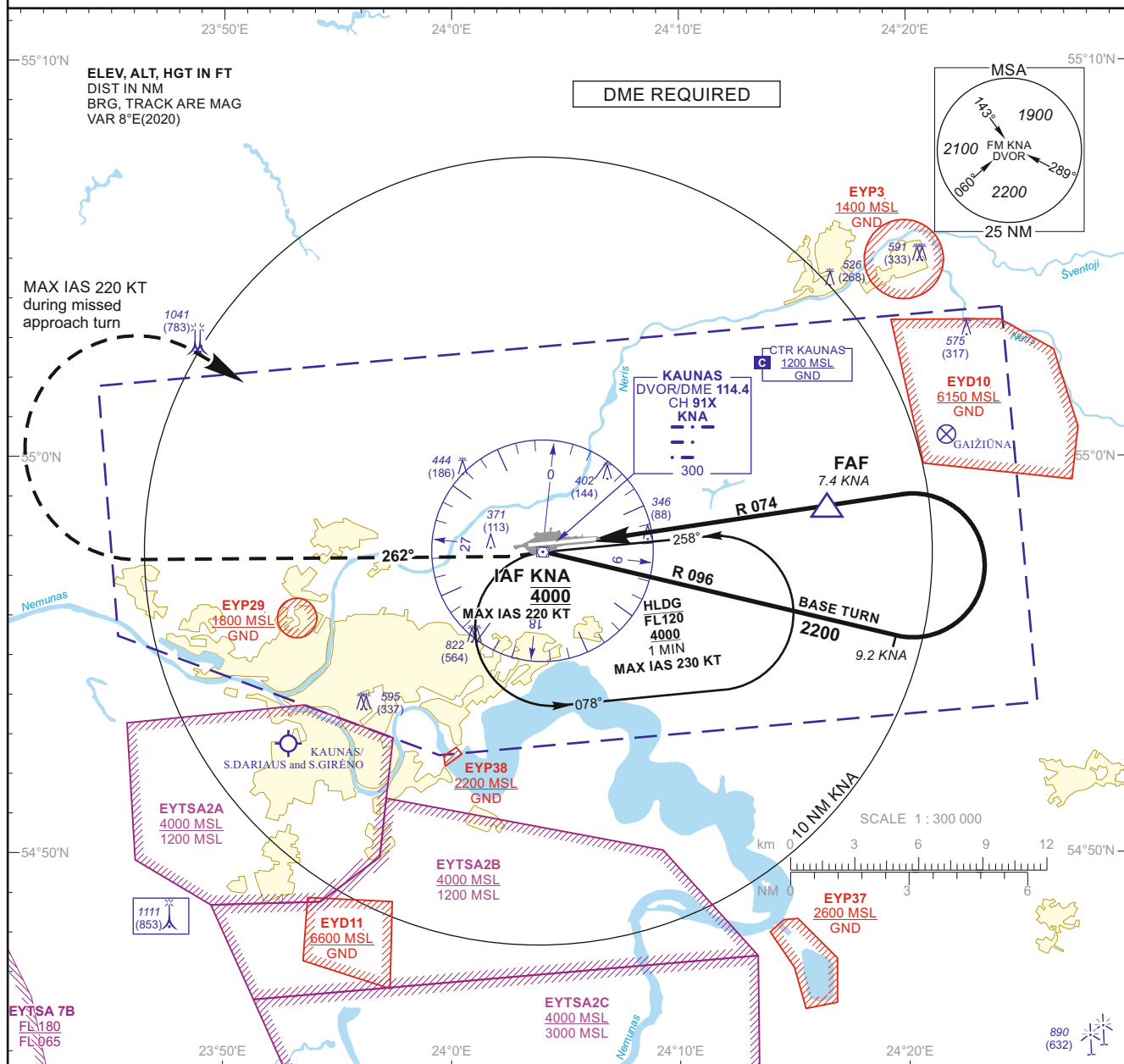


**INSTRUMENT
APPROACH
CHART - ICAO**
AERODROME ELEV 259

 HEIGHTS RELATED TO
DTHR RWY 26 - ELEV 258

 TWR 124.205
118.505
ATIS 129.055

**KAUNAS
VOR Y RWY 26
(CAT C/D)**

MISSED APPROACH

Climb via KNA, then turn right on track 262° to 2200, then turn right (MAX IAS 220 KT) to KNA climbing to 4000. Climb with 3.5% or more until passing 2200 due to airspace structure.

DTHR ELEV 258

 NM to/from DTHR RWY 26
NM to/from DME KNA

DVOR/DME
KNA
4000
BASE TURN R 096
SDF 1140
R 074
MAPt
5.2% (3.0°)
OCA(OCH)
660(400)
2200
7.4

TRANSITION ALT 5000

OCA(OCH)	C	D	DIST DME KNA	7	6	5	4	3
STRAIGHT-IN APPROACH	VOR	630 (370)	Altitude	2090	1770	1460	1140	830
	VOR (when SDF not received)	660 (400)	Height	(1832)	(1512)	(1202)	(882)	(572)
CIRCLING		1230 (970)	not authorized	Timing not authorized for defining the MAPt				
			GS	Kts	80	100	120	140
			FAF - MAPt	5.2 NM	min:sec	3:54	3:07	2:36
			Rate of descent (5.2%)	ft/min	415	520	625	730
					835	940		

For data tabulation see verso

24 FEB 2022

©2019 ORO NAVIGACIJA

AIRAC AMDT 001/2022

Changes: EYP37 and EYP38 added.

INSTRUMENT
APPROACH
CHART - ICAO

AERODROME ELEV 259
HEIGHTS RELATED TO
DTHR RWY 26 - ELEV 258

TWR	124.205
	118.505
ATIS	129.055

KAUNAS
VOR Y RWY 26
(CAT C/D)

TABULAR DESCRIPTION

VOR INSTRUMENT APPROACH from IAF(KNA)

FIX/POINTS	COORDINATES	FIX FORMATION
KNA (IAF)	54 57 37.4N 024 03 59.1E	
FAF	54 58 45.8N 024 16 36.6E	BRG 253.47° / 7.37 NM KNA
SDF	54 58 14.8N 024 10 51.4E	BRG 253.47° / 4.00 NM KNA
MAPt	54 57 58.2N 024 07 47.7E	BRG 253.47° / 2.22 NM KNA
DTHR RWY 26	54 57 53.79N 024 06 19.46E	
Final approach descent angle: 3.00°		

Changes: new chart.